

Upcoming Events

Homecoming 2006

October 21

vs. Illinois

Annual Meeting will be held at 10 a.m., and details of the reception will be provided once kickoff time is announced. All Tau Deltas are encouraged to attend.

Upcoming Nittany Lions Games

- 10/07 at Minnesota
10/14 Michigan
10/21 Illinois (Homecoming)
10/28 at Purdue
11/04 at Wisconsin
11/11 Temple
11/18 Michigan State



These Deltas knew how to tailgate back in '91! Thanks to Glenn Schutz '88 for submitting this photo.

Exclusive On the Web

Plan the Perfect Tailgate at www.psudelts.org

Our website has all of the information you need for pre-gaming this season. Check out everything from stadium maps to tailgating tips in our online Tailgating Central. Invite Delt brothers to your party using our searchable online directory.

Go Nittany Lions!

For more information about these or other upcoming events, please visit our Web site www.psudelts.org



TALES

Tau Company of Delta Tau Delta Fraternity • The Pennsylvania State University
State College, Pa. • October 2006 • www.psudelts.org

Alumni President's Report

LOOKING TO THE FUTURE BY BUILDING OUR HISTORY

By Jim King '78

Welcome to another issue of Tau Tales! Throughout the issue you'll see evidence of continued progress at the chapter, but I'll focus on just a few items.

Shelter renovation progress continues at a steady pace. You will recall that initial work focused on the "bones" of the shelter, including new roofs, bathrooms and plumbing, and water and waste lines. We have now tackled the areas that are more visible to alumni and undergraduates. The entry foyer has been

completely renovated. The 1980s suspended ceiling has been replaced with a full-height, coffered ceiling using stained oak beams.

Complimented by period lighting and oak columns, the renovated foyer provides us with a taste of what the whole first floor will be once we are done. Please see photos on the website at www.psudelts.org, or better yet, stop by the house!

Many of us read about the Beta alumnus who recently donated \$3.5 million to renovate their house at Penn State. No, we don't need that much thanks to the generosity of alums so far! But, one or two significant donors, or a group of donors at the \$100,000 or \$250,000 level would shave years off of our renovation

timetable. There are still opportunities to fund the Chapter Room or Dining Room and earn naming rights for the space. Please contact **Phil Lucas '82** at iasky@earthlink.net or me at kingjim@comcast.net to discuss confidentially.

While we look forward to continued

"While we look forward to continued renovation of the shelter, we need to remember that the core of Tau is about our brotherhood."

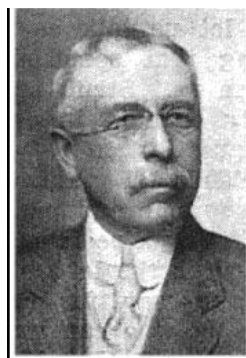
renovation of the shelter, we need to remember that the core of Tau is about our brotherhood. We have made significant strides in recording our history as well as preparing for our future. We've located

a photo of our founder, **Lathan Augustus Crandall**, who made the Tau Chapter of Delta Tau Delta the first fraternity at Penn

State in 1872. We're also collecting reminiscences and photos from brothers of all eras, such as the comments from **Bill Spliethof '46** on page 3.

Looking forward, we are now posting information on graduating seniors so that alums have a chance to hire talented Tau Deltas, so keep tuned to www.psudelts.org if you're looking for a new employee.

If you're in town this season, I encourage you to stop by to meet the active chapter, and to see the great things going on at the house!



**Tau Founder
Lathan Augustus Crandall**

Chapter Report

BRINGING IT IN HOUSE

By Brad Fitzpatrick

The spring semester started off rocky but ended up being our most successful spring in recent history. Nine members were initiated in the spring – all of which bring a wide range of talents and energy to the house. Those members, combined with that of 18 initiated in the fall, gave us a total of 27 new members last year.

With losing only eight members to graduation, we are in an excellent position for this fall. Tau Chapter enters the fall semester with a clean slate, and 17 more guys living in the house than last semester. We look forward to working hard to build a better relationship with the Housing Corporation, and are in the middle of what we hope to be a great fall recruitment.

Our Homecoming partner for this fall is yet another reason to celebrate. This year we will be partnering with Alpha Sigma Alpha, which is yet another step up for us. Having never participated in any events with these girls in recent years, we're looking forward to making it the best Homecoming we've ever had.

“Tau Chapter enters the fall semester with a clean slate, and 17 more guys living in the house than last semester.”

Coming off of last year's second place finish in Greek Sing, we are ready to win this year. We will be partnering with the women of Alpha Xi Delta, and will build off of the experience of last year to make the upcoming performance unforgettable.

The biggest news for the fall is our partnership with the women of Delta Zeta for THON 2007. Delta Zeta helped us achieve a second place victory in Greek Sing last year, and we're looking to transfer that momentum into THON. Our goal for this year is to obtain a top-ten finish, something our house has never accomplished. With the 64 members in our house and more than

70 women in their sorority, we'll be able to make a big difference for the kids.

I welcome your feedback and suggestions. Feel free to contact me at bjf201@psu.edu.



More than just brotherly love. Delts support not only their THON dancers, but also their sponsor children. THON raised more than \$4.2 million for the prevention of cancer in children this year.



We thought most college kids traveled to warm places for spring break! These Delts chose to hit the slopes instead at Mount Tremblant in Quebec last spring.

Alumni NEWS

William Snyder III '51
(3087 Pinewood St., Orange, CA 92865-1221; wfsny9400@aol.com)

I have been president of Anaheim/Orange County Hotel/Lodging Assn., a retirement position, for 10 years.

Jim King '78
(1441 E. Lamplighter Ln., North Wales, PA 19454-3695; kingjim@comcast.net)
I work with **Terry Morris, Tau '77** and **Rick Price, Tau '80** ... so more than 5% of our firm's employees are Penn State Delts!

Where Have You Been?

We need your news! Have you recently gotten married? Had a baby? Become a grandfather? If so, your Delt brothers want to hear about it!

Log onto the website at **www.psudelts.org** to submit your update and read up on your old friends.

Just a few recollections of those early days of chapter reactivation in the 1945-46 time period. Once the decision was reached to reactivate Tau with a relatively small group formed by **Jack Townsend**, alumni stepped in to help with chapter reactivation. One was **Walt Nissley '10** who was a Penn State Delt and a professor in the Ag. School (there were no colleges, because Penn State was The Pennsylvania State College back then). Walt became the chapter advisor and was the only chapter advisor I ever knew. Within a few months after activation, service men started returning from the war. The job of melding returning Delts, mostly 22 and older with battlefield service, with the new group of 18- and 19-year-old Delts who had not been rushed or selected, was not an easy task. The chapter advisor had an important role to play.

The other alumnus that I probably knew better than any other brother was **C. M. Martsolf '09** (that's 1909!), who was better known as "Sally." The reason I got to know him so well was through my job as Treasurer. Sally was a finance guy and spent hours training me. Why a guy (a.k.a. me) majoring in chemistry was named Treasurer is a mystery to this day. I liked

the idea, because the Treasurer was paid \$27 per month and the monthly room rent was only \$19. So I was being paid to live in the Delt house. That's before I realized how time consuming the Treasurer's job really was. Collect the rent from everyone, pay all the bills and make sure the books were balanced at month's end. I still remember one Saturday night, after my first month as Treasurer. Sally came up for the weekend to

"The job of melding returning Delts, mostly 22 and older with battlefield service, with the new group of 18- and 19-year-old Delts who had not been rushed or selected, was not an easy task. The chapter advisor had an important role to play."

check the books, and I was off balance by 29 cents. Sally and I sat in my room until after midnight until we found the 29 cents. He was thrilled, I was relieved (and reinforced in my decision to major in chemistry). As

I look back on that time as I have many times over the years, I realized how much I learned from Brother Martsolf. Most of my career was in chemical industry management, particularly in the international area, and that early exposure to accounting turned out to be a blessing.

The chapter prospered with the combination of the new initiates and tough ex-GIs and the rushes I recall were quite successful. After about a year, we had enough pledges and brothers to open the kitchen and dining room. The house was designed to have a couple work as cook and manager, with furnished living quarters. If I remember correctly, we could only find a cook. I had had experience as a waiter and dishwasher in boarding houses and girls dormitories. So I was asked to take on the job of kitchen/dining room manager. The salary was free board. The combination of Treasurer's salary and free board meant that I was being paid to be a Delt. I think that was probably a first and still may be the only time in the Tau chapter.

That's it for now, but as more memories occur, you'll hear from me again, unless this has you worn out more than I was when searching for 29 cents.

Laugh So Hard Your Guts Hurt



In what "dangerous game" did a Delt injure himself during the late '50s?

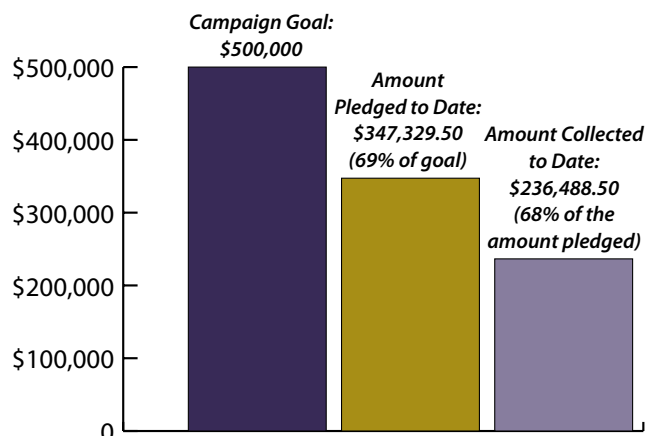
What were the "Delt Machines" of the late '80s?

What does one brother remember another drinking a shot of in the late '80s?

Visit www.psudelts.org to find these answers and read more hilarious stories submitted by Delt brothers!

On Our Way to Strengthening the Bond!

Thank you for the alumni donors who have pledged their support for our Strengthening the Bond Capital Campaign. Because of their support, we are well on the way to meeting our \$500,000 campaign goal!



Back On an Upward Climb!

THANK YOU TO THE DONORS WHO SUPPORT OUR ANNUAL FUND

The Tau Company of Delta Tau Delta would like to thank the 67 alumni donors who contributed to our 2005-06 annual fund, which ended August 31. Help us keep our numbers rising! Kick off the 2006-07 giving year by making your gift today. It's easy. Just visit www.psudelts.org or call 800-975-6699 to make your donation.

We Need Your Email Address!

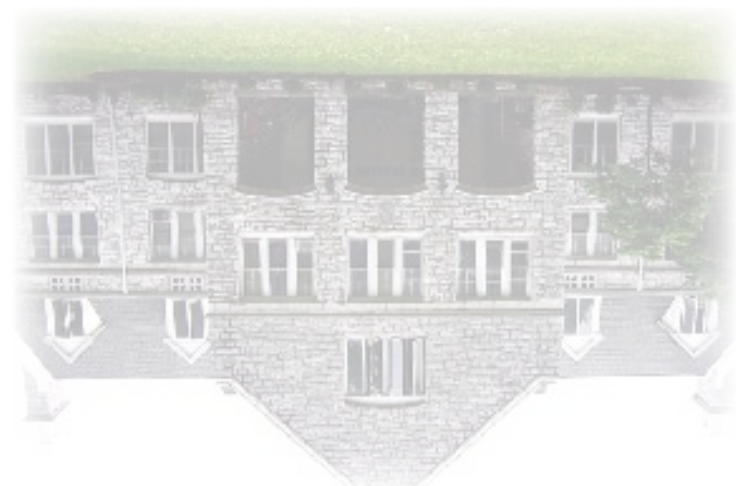
Make sure you're receiving ALL issues of our newsletter (both print and electronic) by updating your email address online at www.psudelts.org!

Party On!

Tau Chapter is looking to build its legacy by collecting old photographs and other items you may have saved from your years at Penn State. Specifically, we are looking for photographs to represent each decade of our history! Group shots of parties, mixers, dances, etc. are also wanted. Please submit photos from your era online at www.psudelts.org.



Party On! These Delts sure could entertain the ladies, especially at this late '50s house party. Thanks to Bob Schimmel '60 for submitting this photo.



514-053 FN

Address Service Requested

Albert Lea, MN 56007-8007
P.O. Box 7007

Alumni Relations Processing Center

PENN STATE

Delta Tau Delta Fraternity



Read about Shelter Renovations, the Capital Campaign and more!

PRSR STD
US POSTAGE
PAID
MILWAUKEE, WI
PERMIT NO. 3242